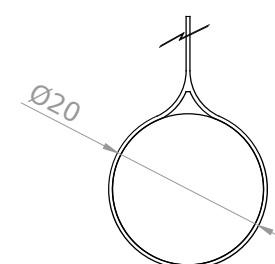
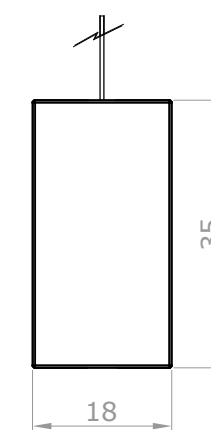
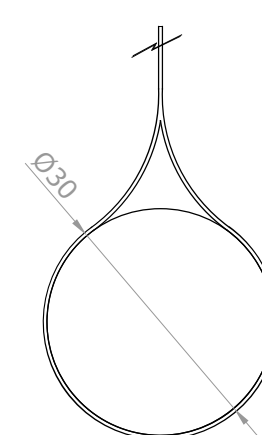


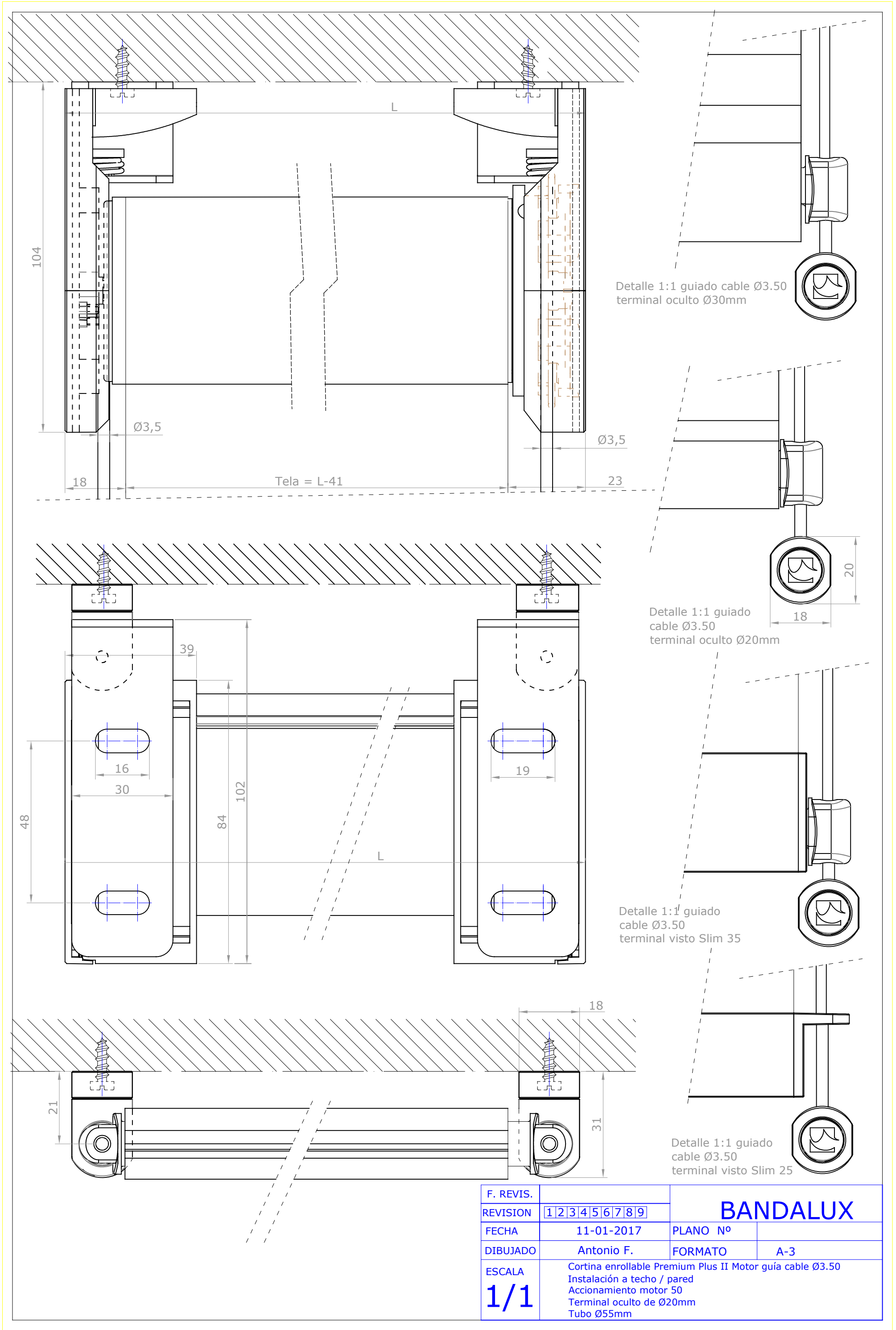
LADO APOYO

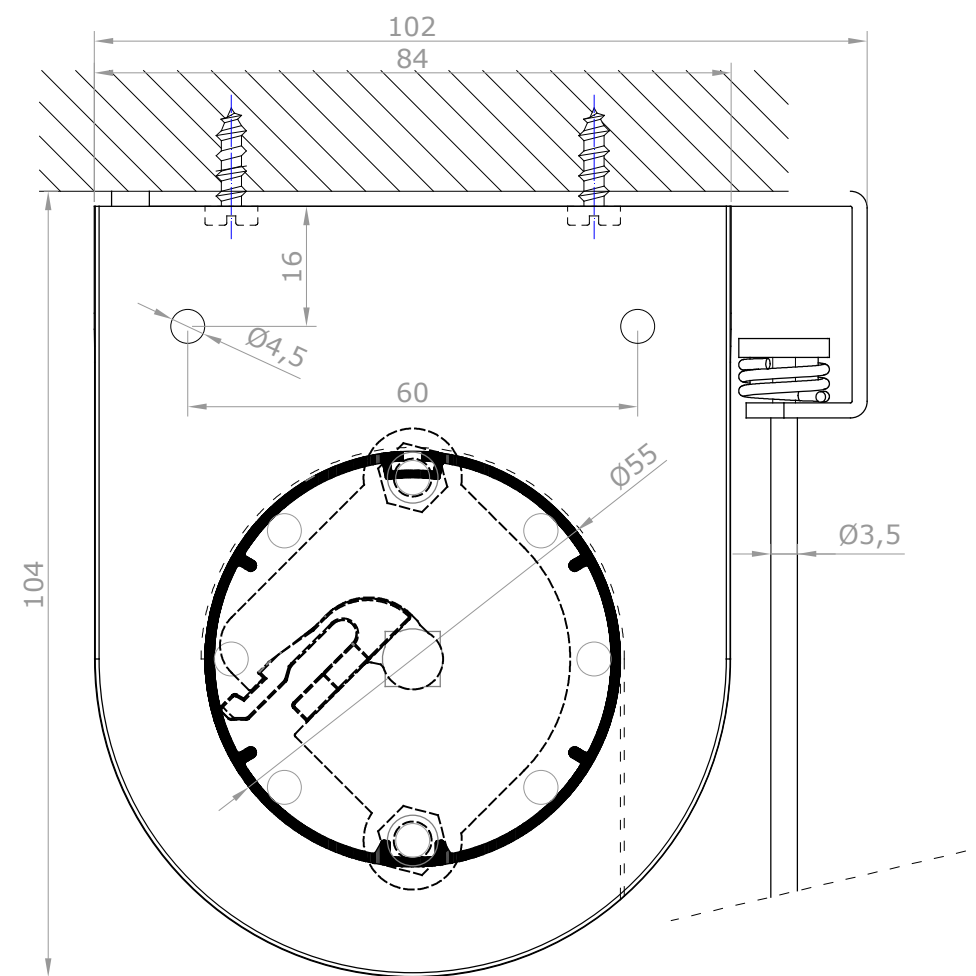
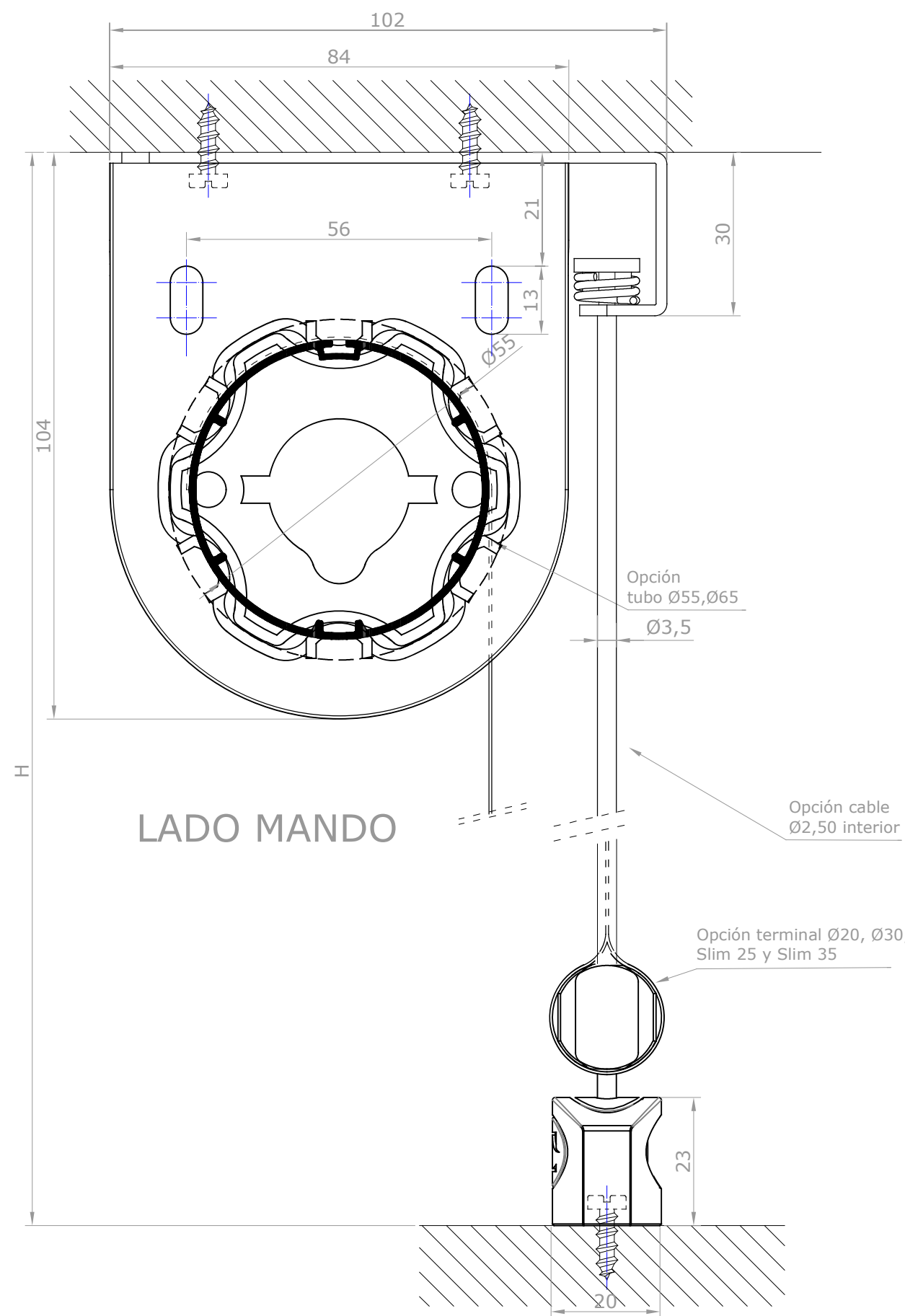
Opción terminal Ø20, Ø30,  
Slim 25 y Slim 35



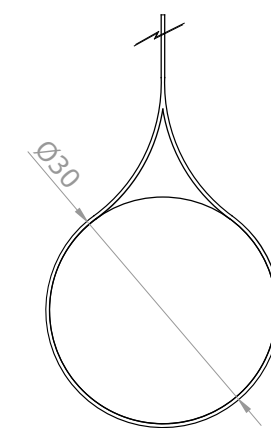
Detalle 1:1 terminal oculto Ø30mm    Detalle 1:1 terminal Slim 35

F. REVIS.		BANDALUX	
REVISION	1 2 3 4 5 6 7 8 9		
FECHA	11-01-2017	PLANO Nº	
DIBUJADO	Antonio F.	FORMATO	A-3
ESCALA	Cortina enrollable Premium Plus II Motor guía cable Ø3.50 Instalación a techo / pared Accionamiento motor 50 Terminal oculto de Ø20mm Tubo Ø55mm		
1/1			

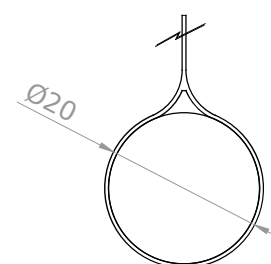




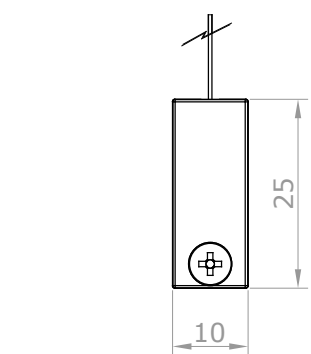
LADO APOYO



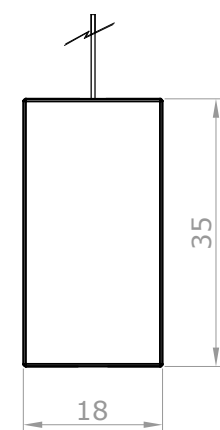
Detalle 1:1 terminal oculto Ø30mm



Detalle 1:1 terminal oculto Ø20mm

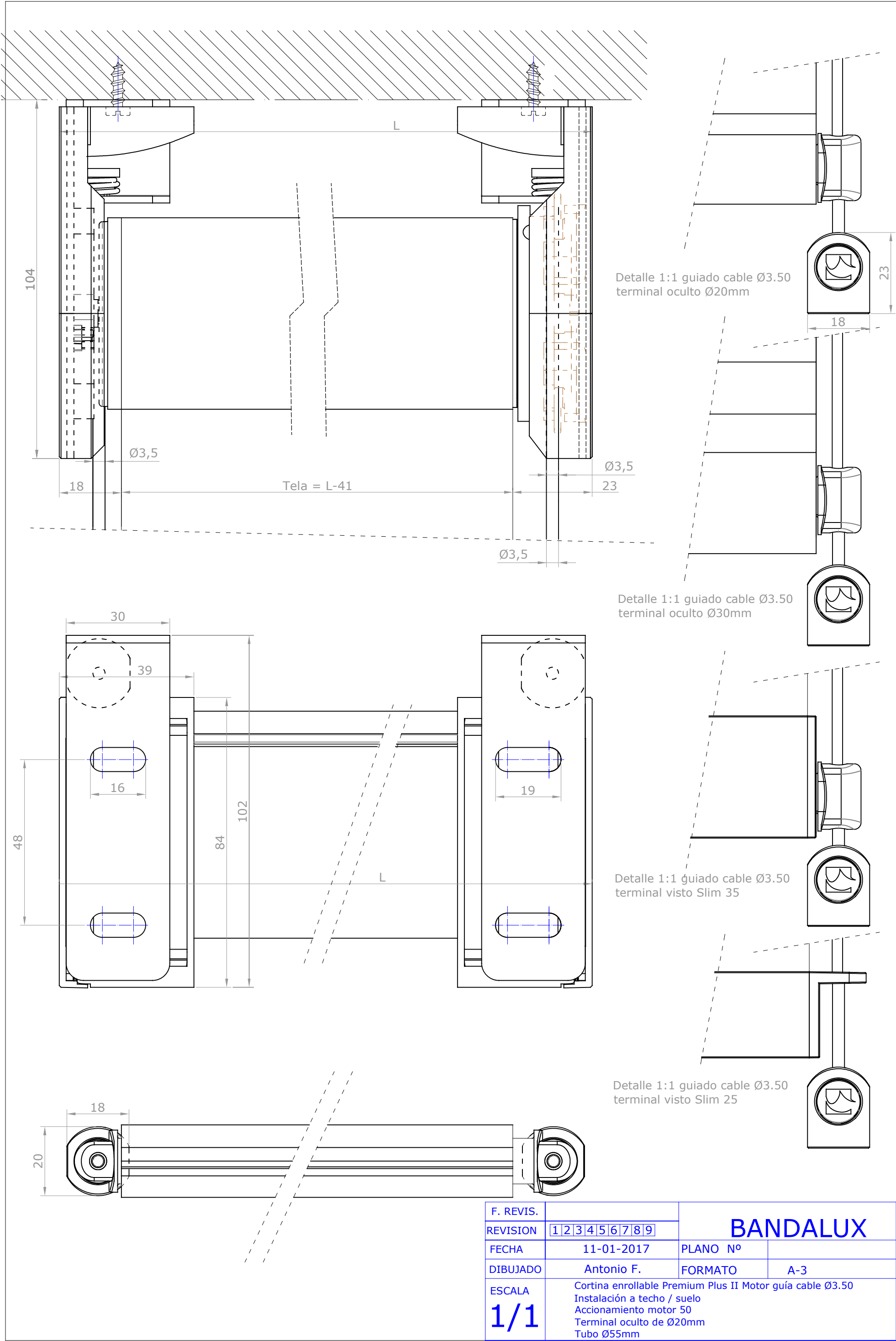


Detalle 1:1 terminal Slim 25

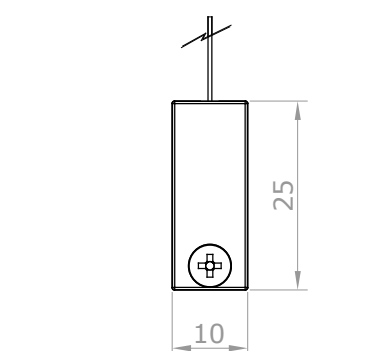
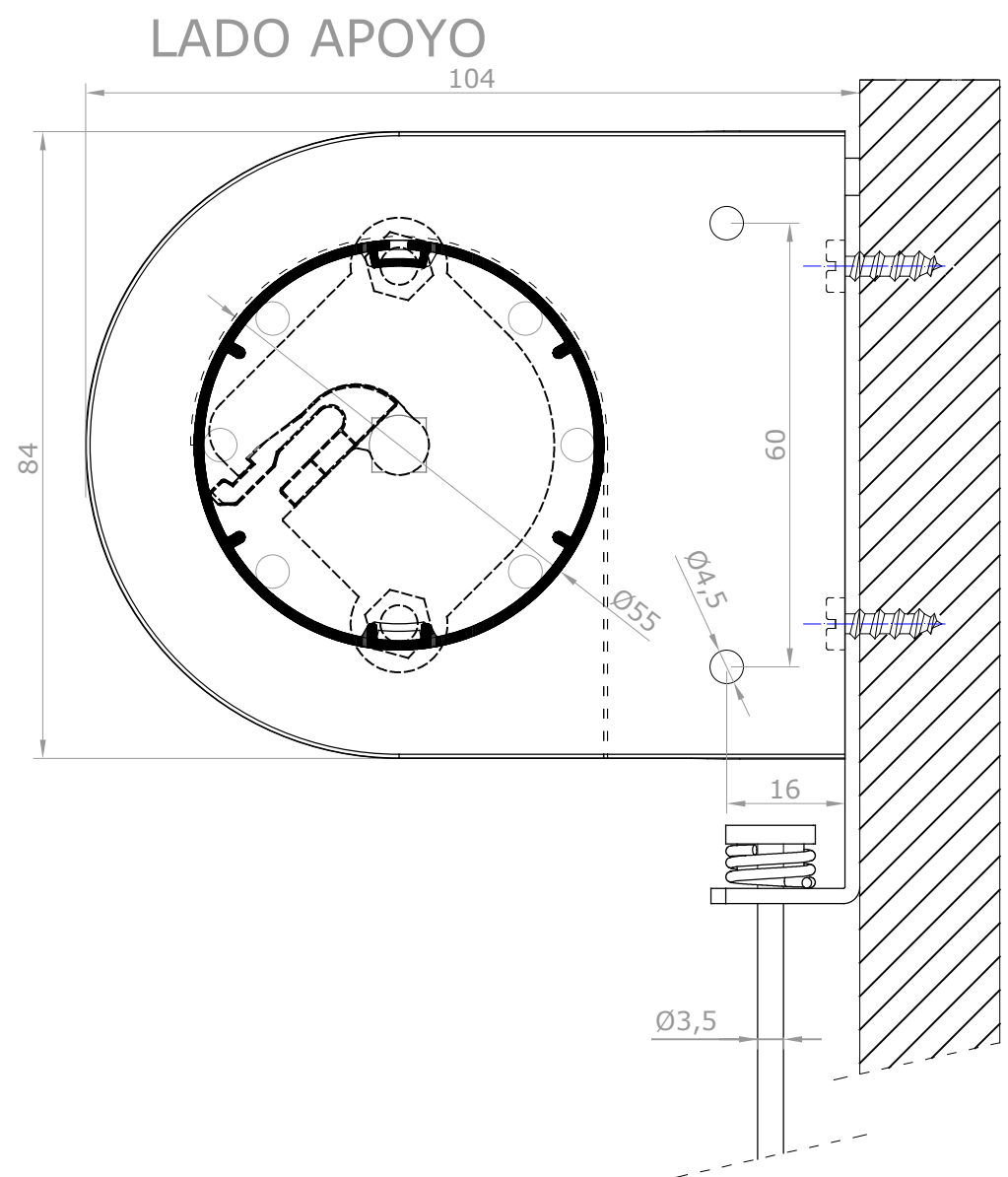
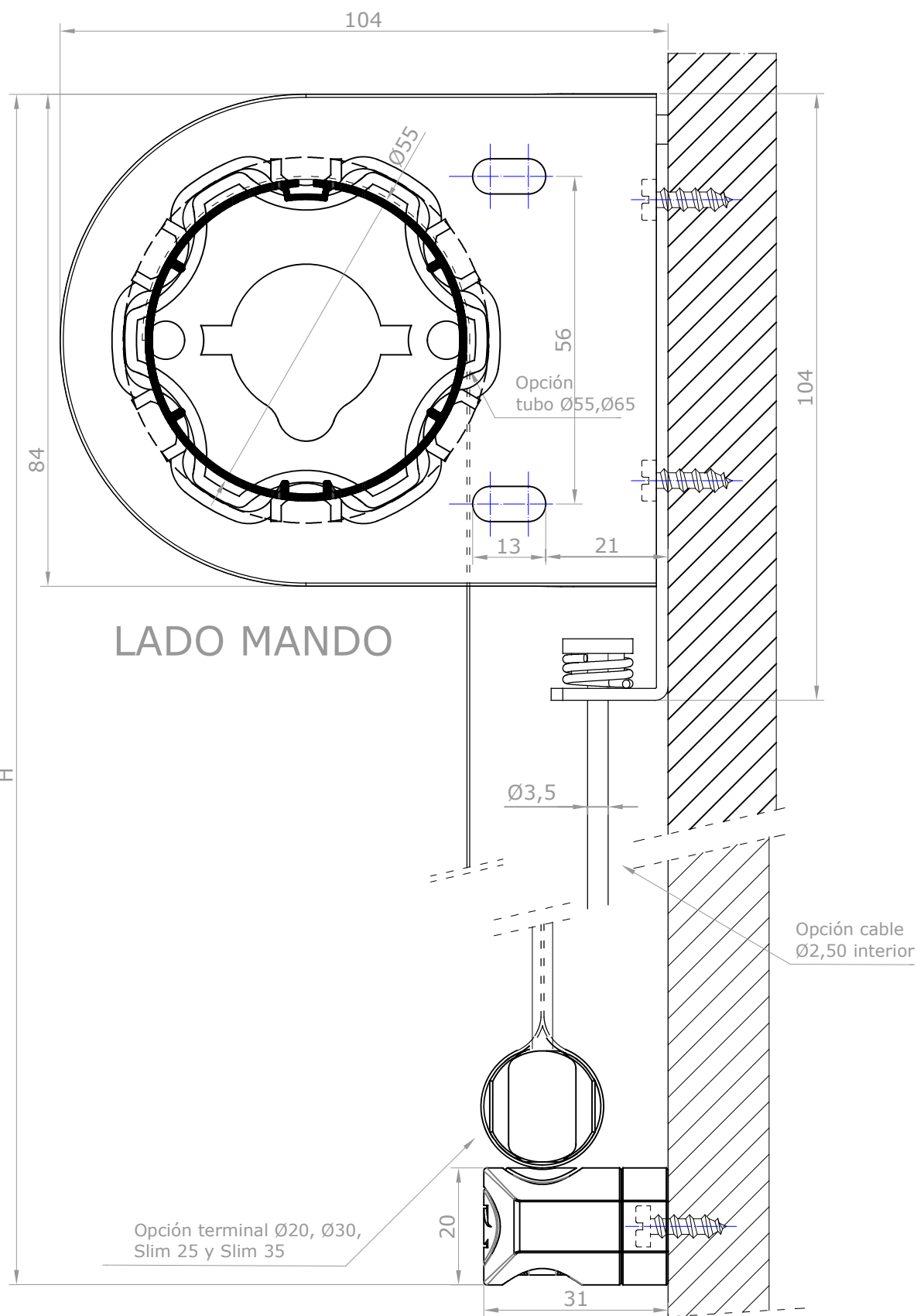


Detalle 1:1 terminal Slim 35

F. REVIS.		<b>BANDALUX</b>	
REVISION	1 2 3 4 5 6 7 8 9		
FECHA	11-01-2017	PLANO N°	
DIBUJADO	Antonio F.	FORMATO	A-3
ESCALA	Cortina enrollable Premium Plus II Motor guía cable Ø3.50 Instalación a techo / suelo Accionamiento motor 50 Terminal oculto de Ø20mm Tubo Ø55mm		
1/1			



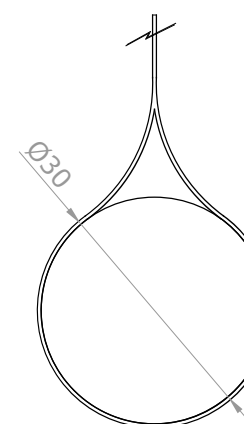
F. REVIS.		BANDALUX	
REVISION	123456789		
FECHA	11-01-2017	PLANO Nº	
DIBUJADO	Antonio F.	FORMATO	A-3
ESCALA	Cortina enrollable Premium Plus II Motor guía cable Ø3.50 Instalación a techo / suelo Accionamiento motor 50 Terminal oculto de Ø20mm Tubo Ø55mm		
1/1			



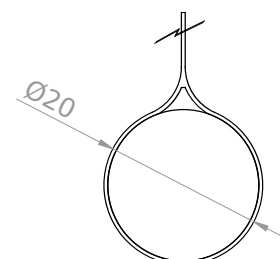
Detalle 1:1 terminal Slim 25



Detalle 1:1 terminal Slim 35

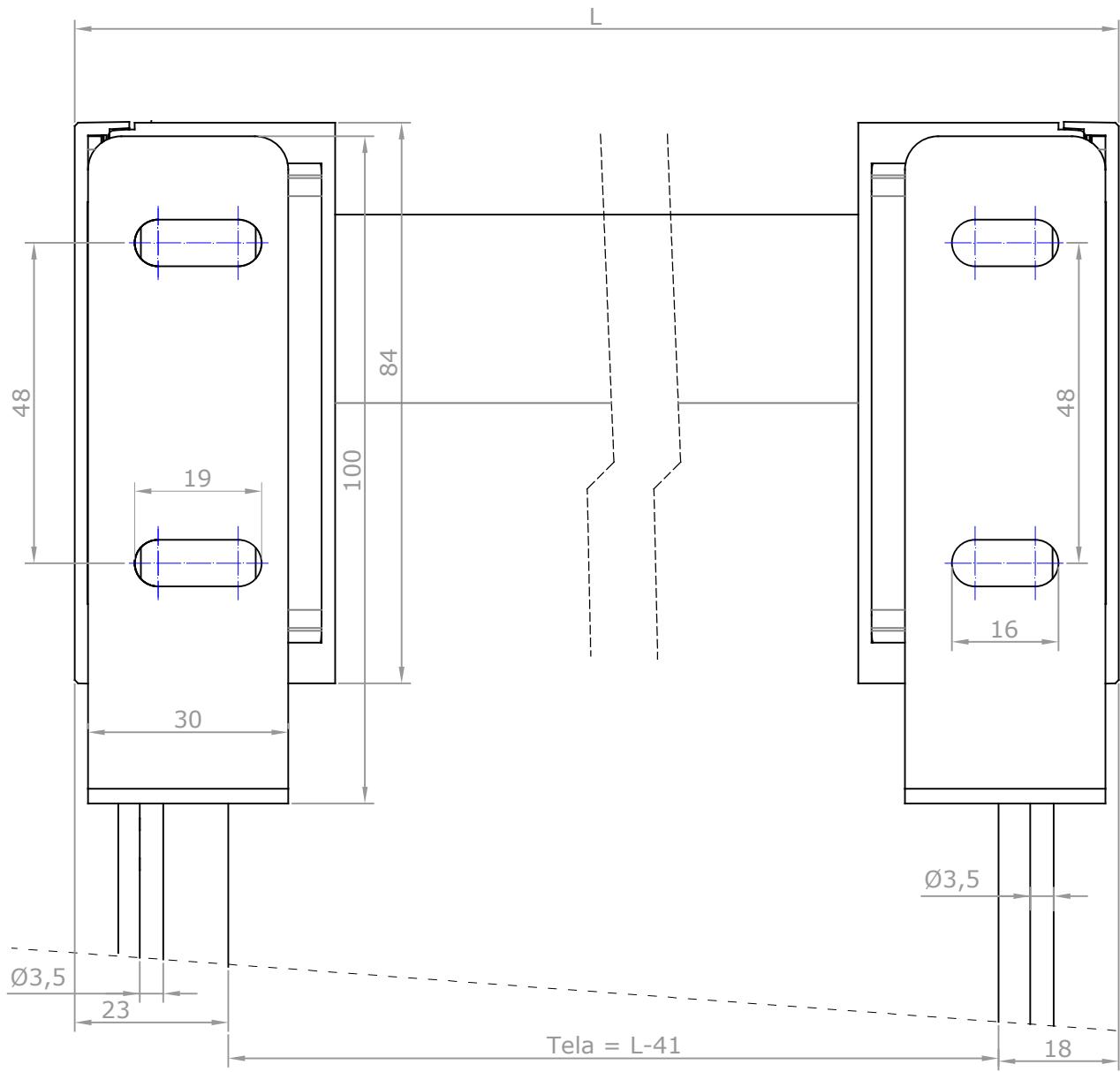


Detalle 1:1 terminal oculto Ø30mm

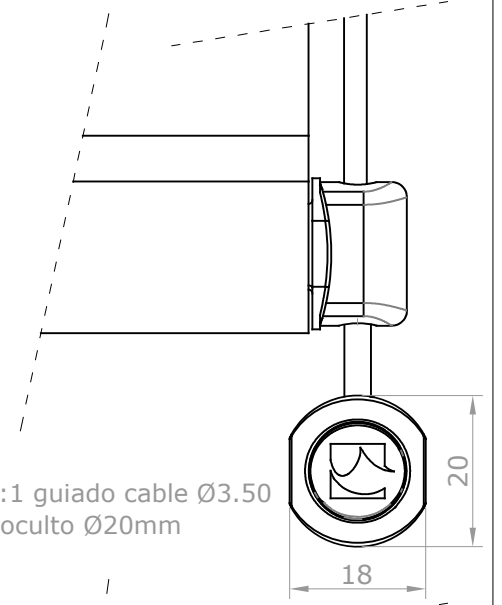


Detalle 1:1 terminal oculto Ø20mm

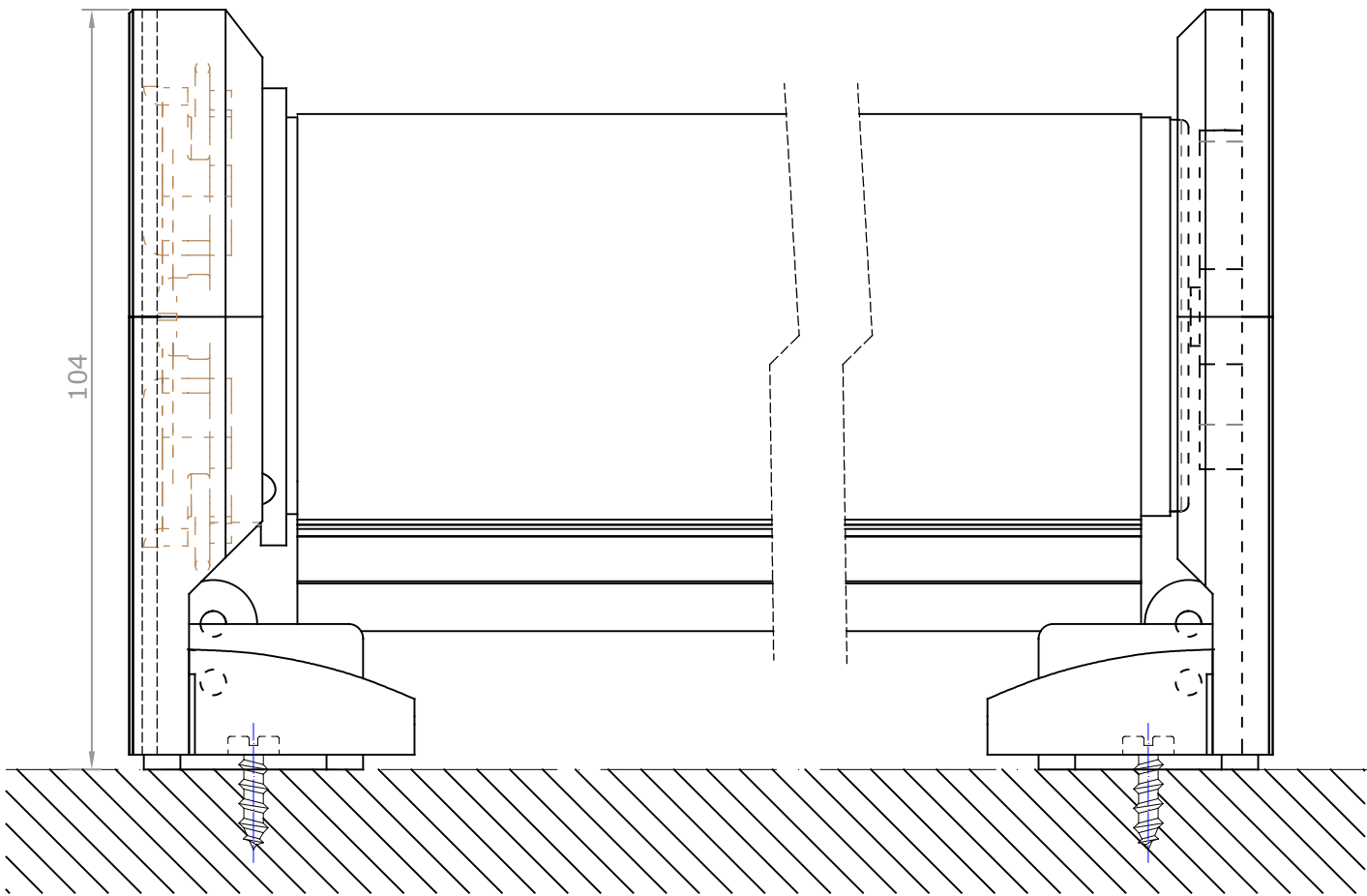
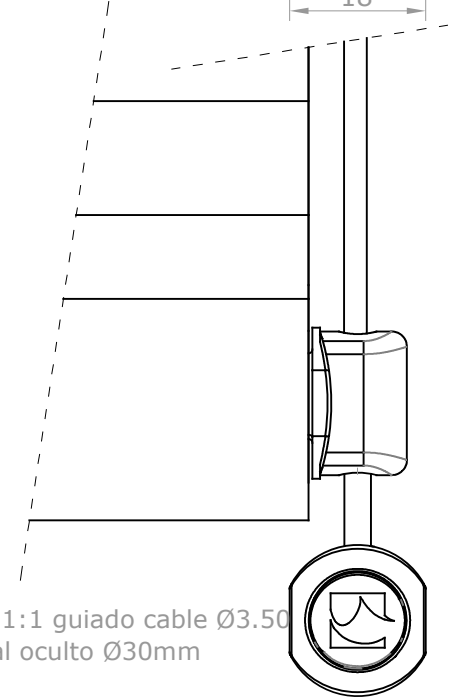
F. REVIS.		BANDALUX	
REVISION	1 2 3 4 5 6 7 8 9		
FECHA	23-01-2017	PLANO Nº	
DIBUJADO	Antonio F.	FORMATO	A-3
ESCALA	Cortina enrollable Premium Plus II Motor guía cable Ø3.50 Instalación a pared / pared Accionamiento motor 50 Terminal oculto de Ø20mm Tubo Ø55mm		
1/1			



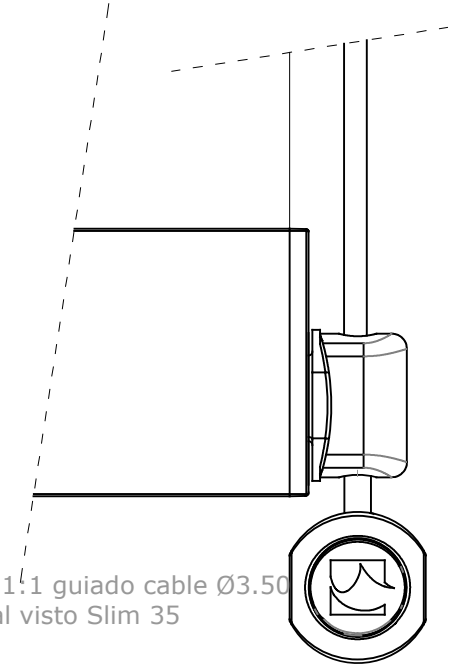
Detalle 1:1 guiado cable Ø3.50  
terminal oculto Ø20mm



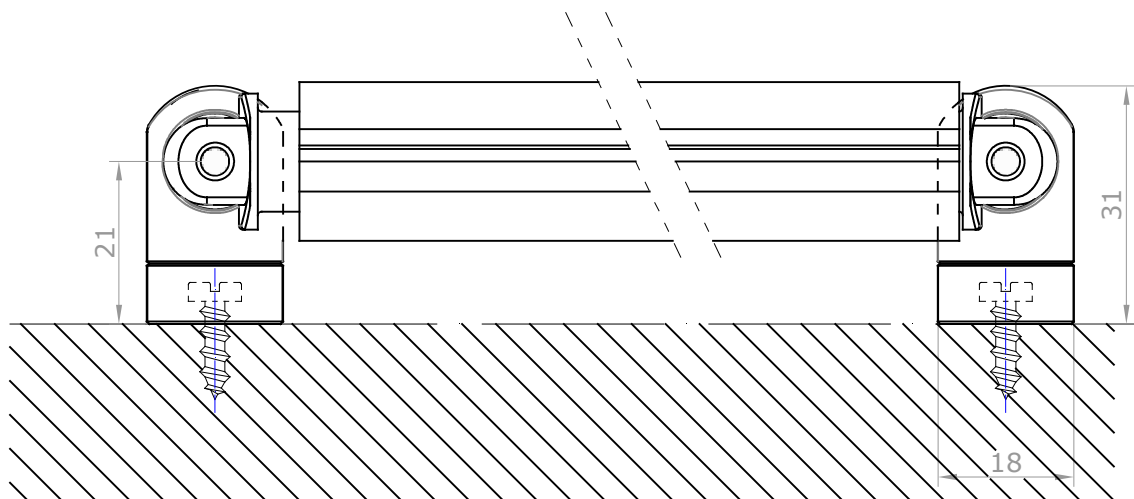
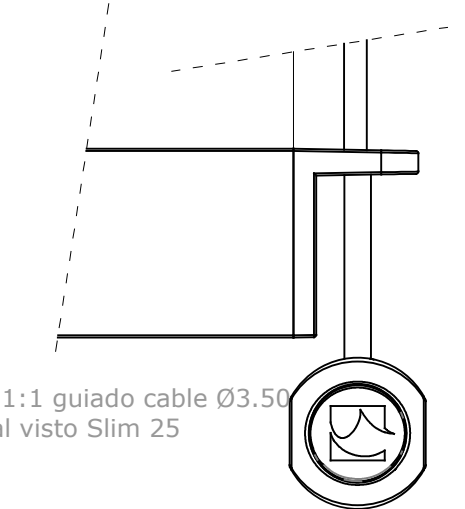
Detalle 1:1 guiado cable Ø3.50  
terminal oculto Ø30mm



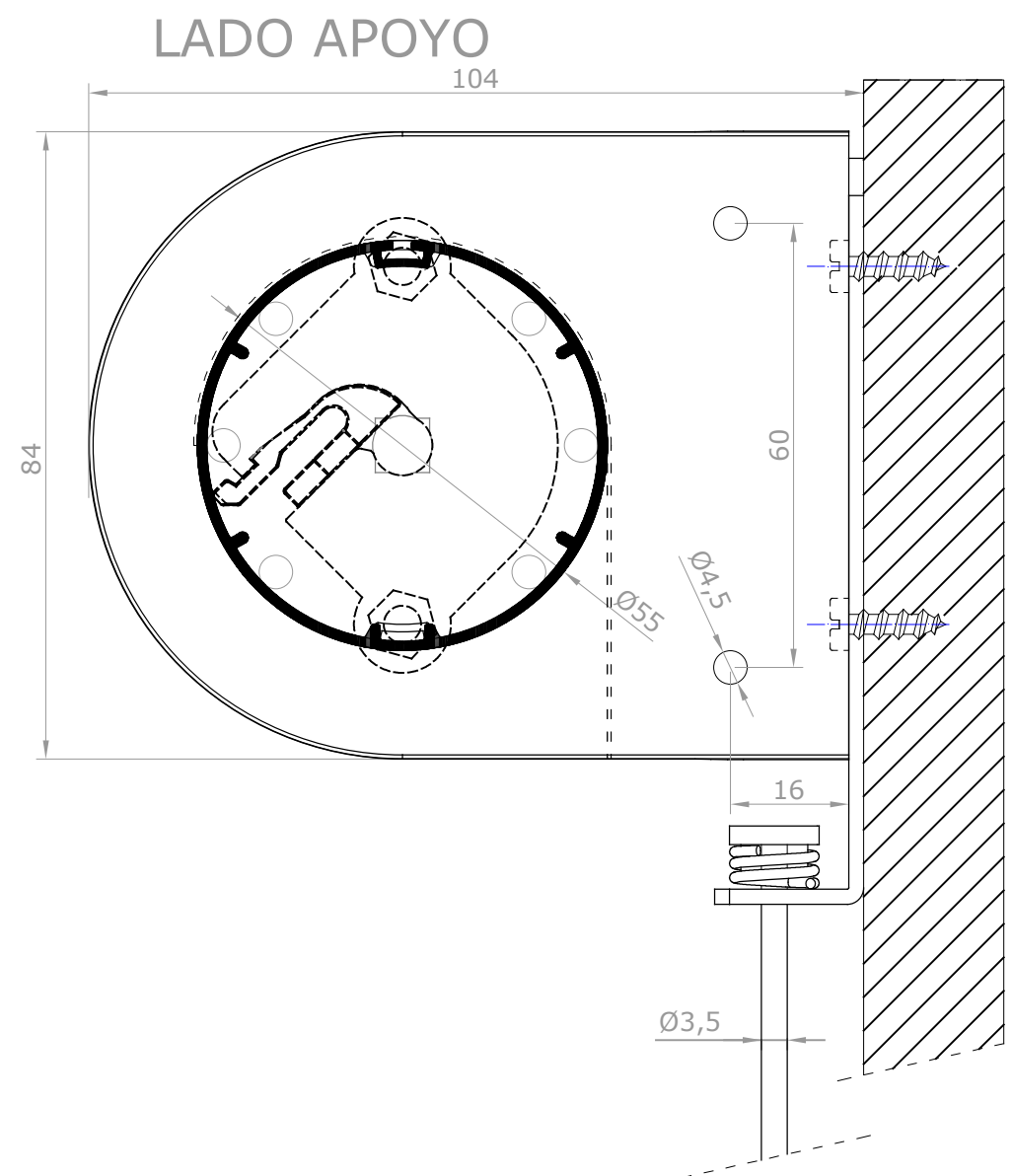
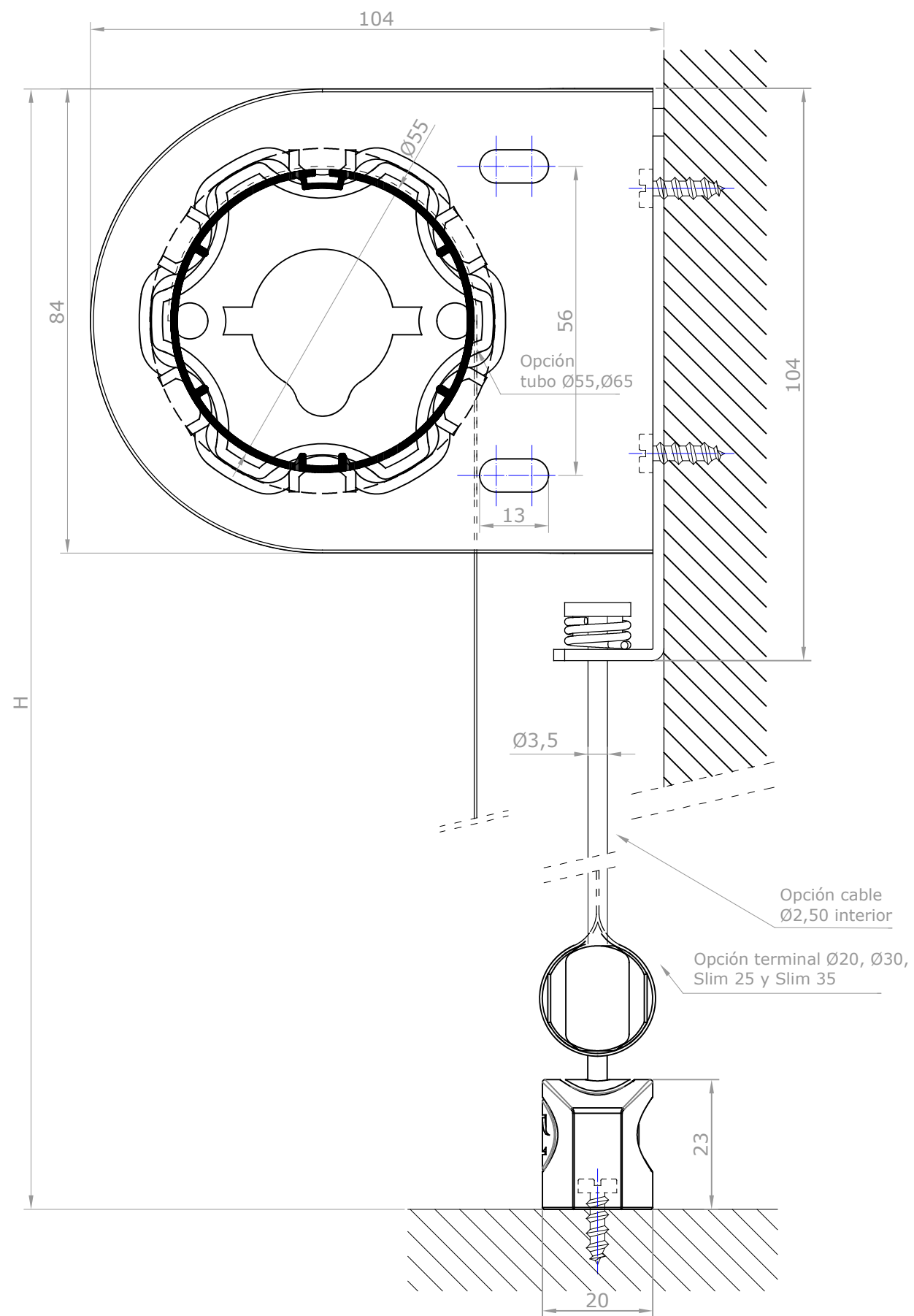
Detalle 1:1 guiado cable Ø3.50  
terminal visto Slim 35



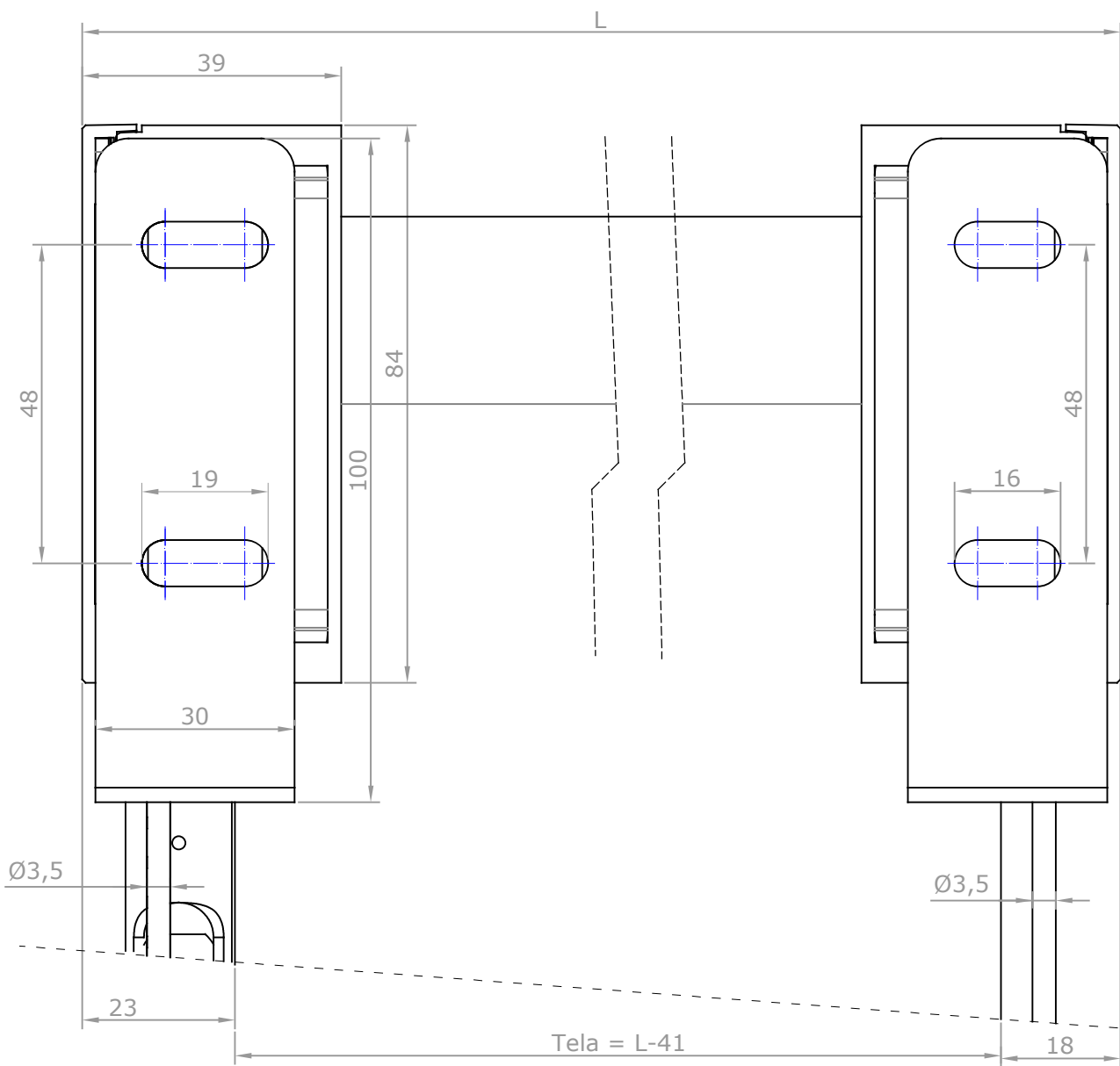
Detalle 1:1 guiado cable Ø3.50  
terminal visto Slim 25



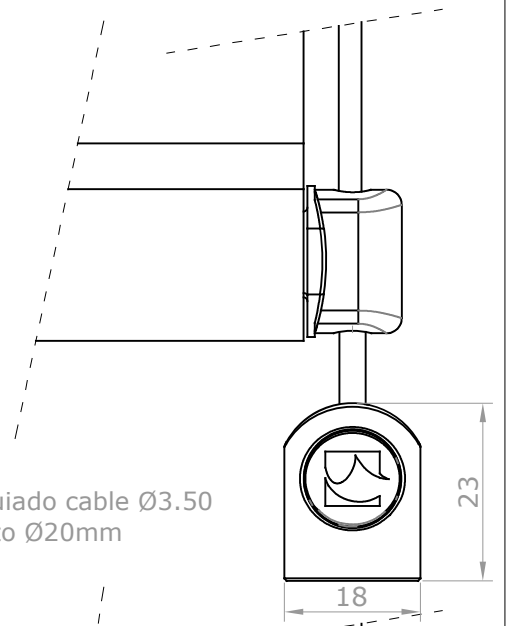
F. REVIS.	BANDALUX		
REVISION			
FECHA	11-01-2017	PLANO Nº	
DIBUJADO	Antonio F.	FORMATO	A-3
ESCALA	Cortina enrollable Premium Plus II Motor guía cable Ø3.50 Instalación a pared / pared Accionamiento motor 50 Terminal oculto de Ø20mm Tubo Ø55mm		
1/1			



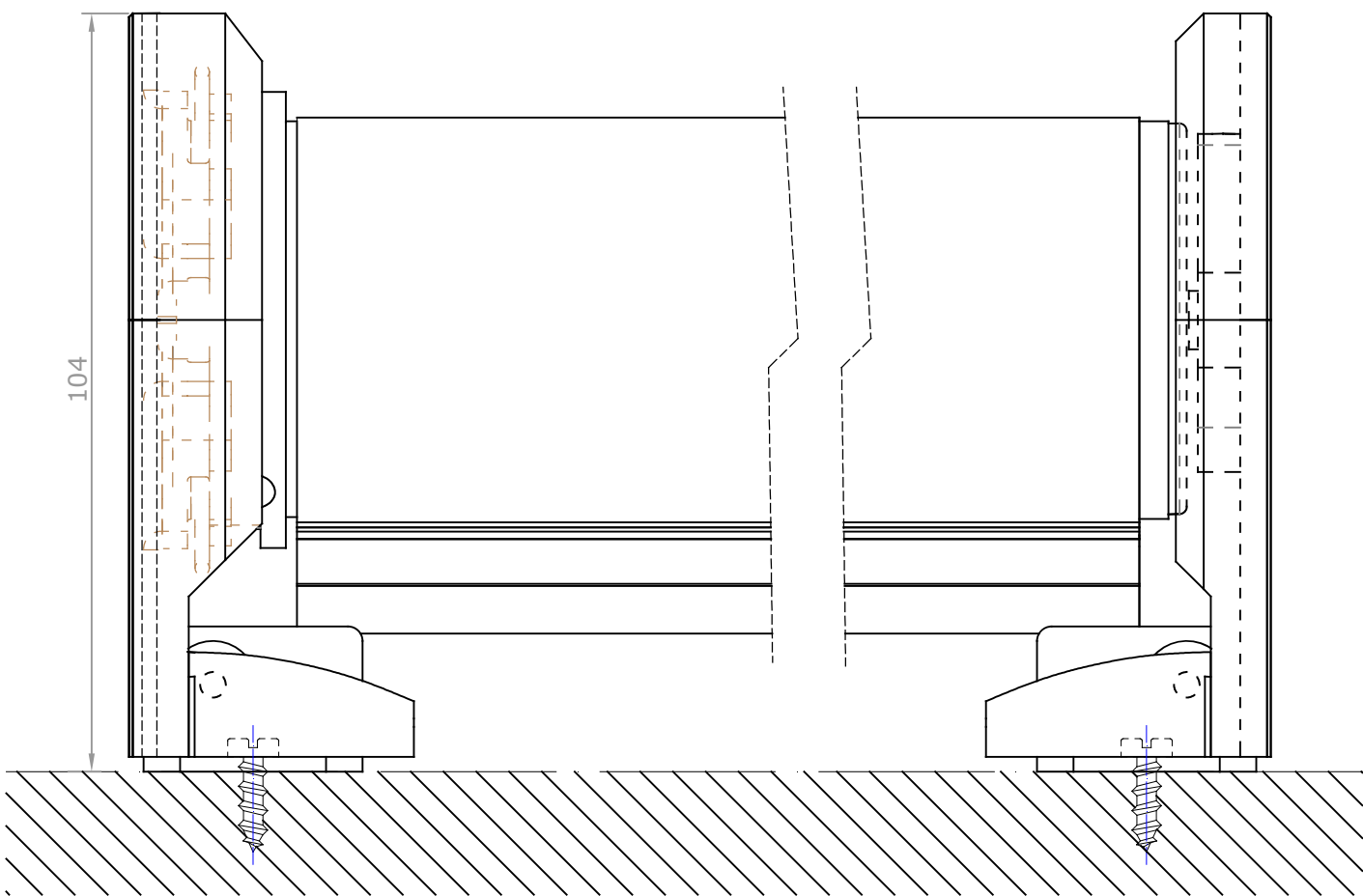
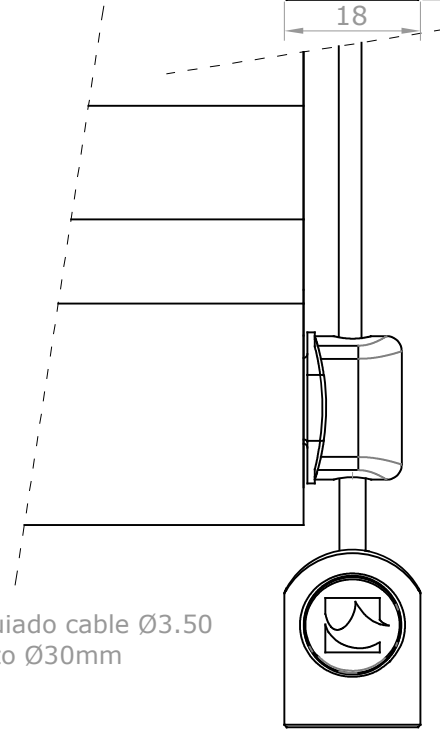
F. REVIS.		BANDALUX	
REVISION	1 2 3 4 5 6 7 8 9		
FECHA	23-01-2017	PLANO N°	
DIBUJADO	Antonio F.	FORMATO	A-3
ESCALA	Cortina enrollable Premium Plus II Motor guía cable Ø3.50 Instalación a pared / suelo Accionamiento motor 50 Terminal oculto de Ø20mm Tubo Ø55mm		
1/1			



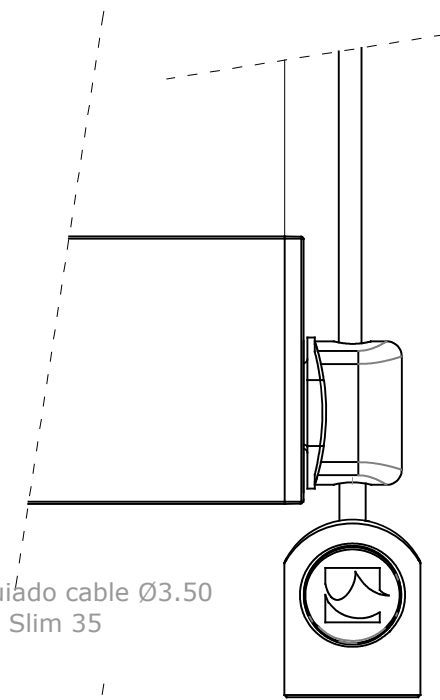
Detalle 1:1 guiado cable Ø3.50  
terminal oculto Ø20mm



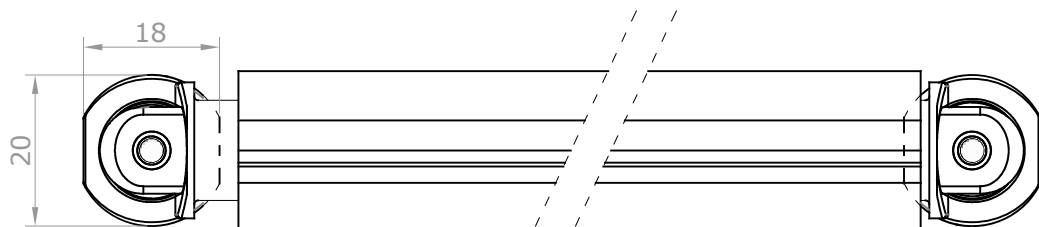
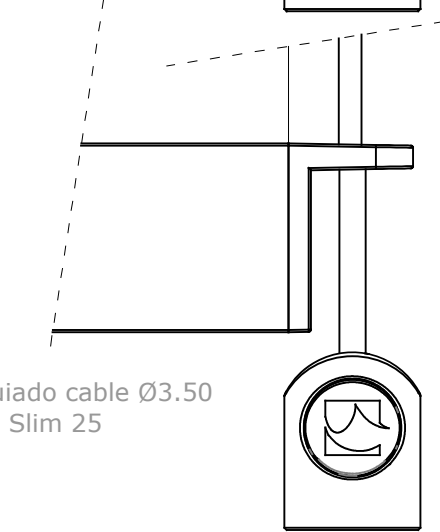
Detalle 1:1 guiado cable Ø3.50  
terminal oculto Ø30mm



Detalle 1:1 guiado cable Ø3.50  
terminal visto Slim 35



Detalle 1:1 guiado cable Ø3.50  
terminal visto Slim 25



F. REVIS.		<b>BANDALUX</b>	
REVISION	123456789		
FECHA	23-01-2017	PLANO N°	
DIBUJADO	Antonio F.	FORMATO	A-3
ESCALA	Cortina enrollable Premium Plus II Motor guía cable Ø3.50 Instalación a pared / suelo Accionamiento motor 50 Terminal oculto de Ø20mm Tubo Ø55mm		
1/1			